

2026 H2 AI Infrastructure: Separating Utility from Hype

An Institutional Analysis of the Post-Bubble Realignment

The Divergence of 2026

Why "AI Mentions" no longer drive Alpha

The Three Pillars of Utility



Monetization

Focus shifts from R&D pilots to verified revenue delivery. Adopters show 2x cash-flow margin expansion vs. peers.



Sovereignty

Nations and Hyperscalers are treating compute and energy as critical national security assets, decoupling from legacy grids.



Efficiency

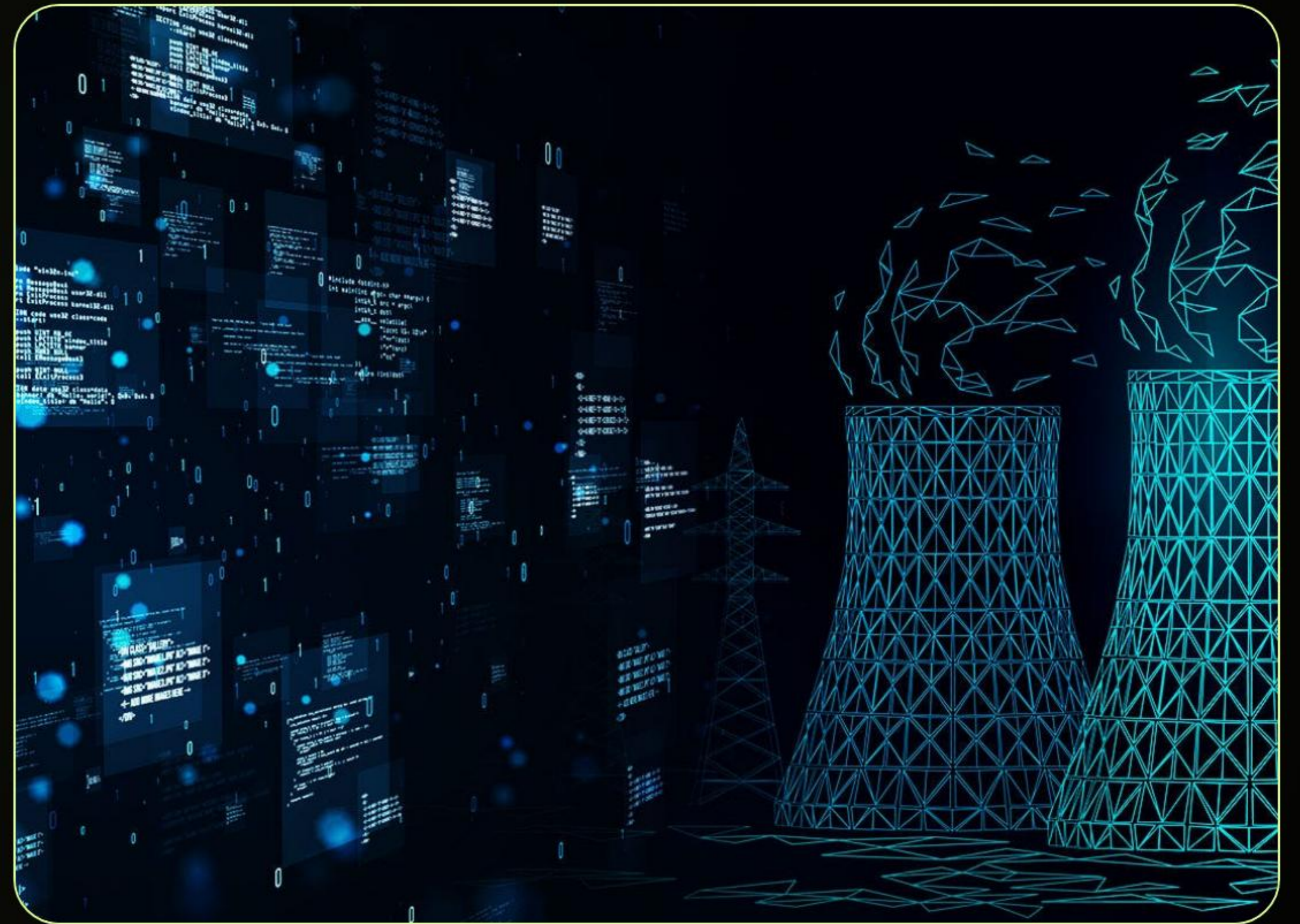
Custom ASIC growth (44.6%) is outpacing GPUs (16.1%) for the first time as inference costs become the primary bottleneck.

Hitting the Energy Wall

The Nuclear Necessity

Data center electricity demand is projected to rise 160% by 2030.
Intermittent renewables cannot scale to meet 24/7 load profiles.

- 15 new reactors online in 2026
- SMRs (Small Modular Reactors) providing "Campus Power"
- Big Tech acting as Energy Utilities



The Trillion Dollar Cycle

\$600B+

Hyperscaler CapEx 2026

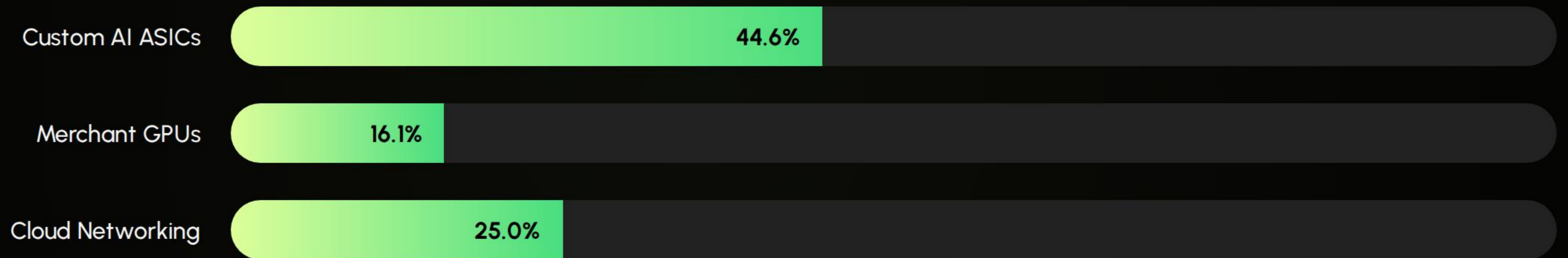
45%

YoY Growth in Infrastructure

\$3T

Est. Cumulative Build-out
(2028)

2026 Growth: ASIC vs GPU

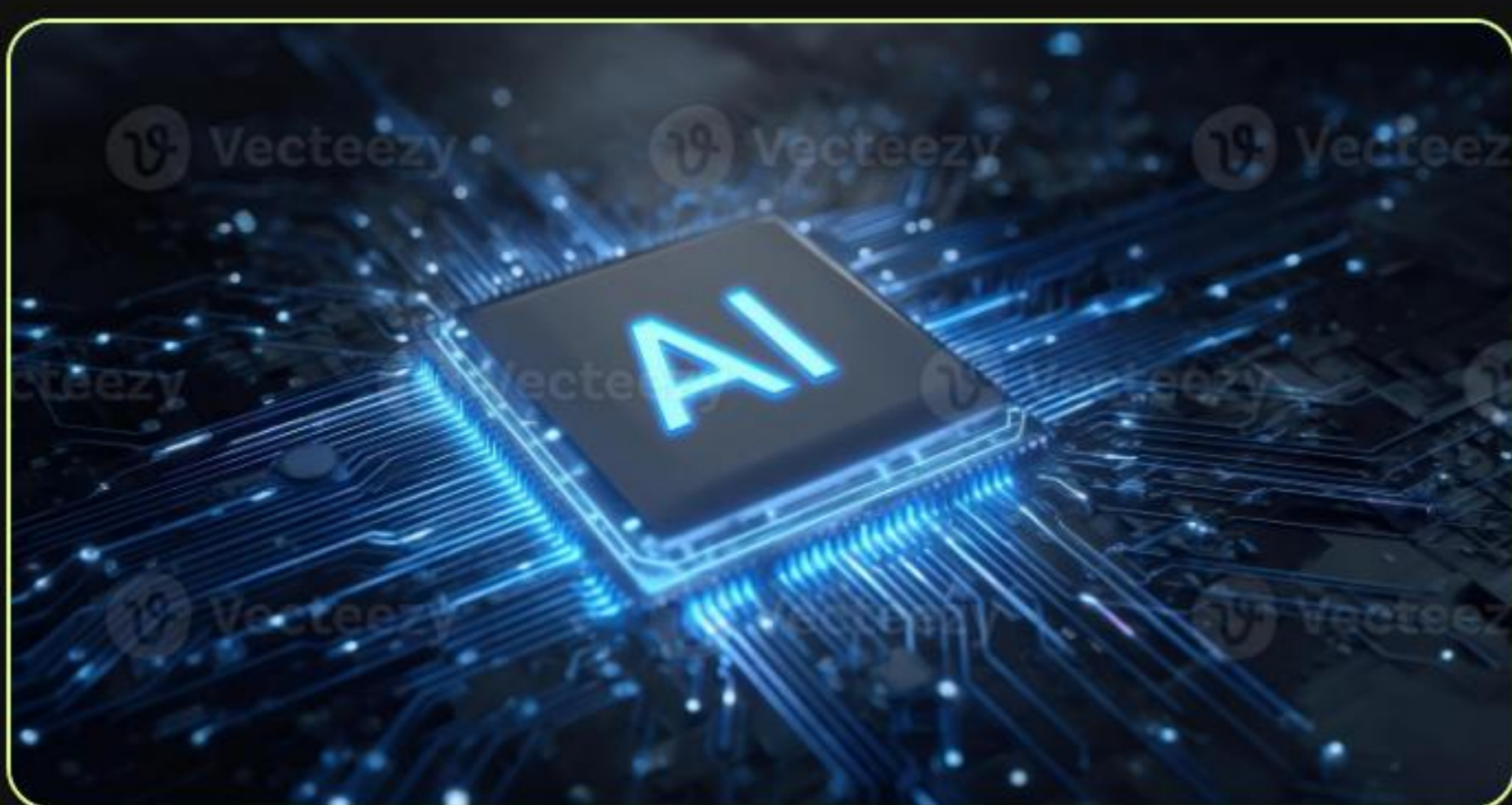


*Source: Morgan Stanley / TrendForce 2026 Analysis. Focus is shifting to cost-per-token efficiency.

Screening for Bottleneck Winners

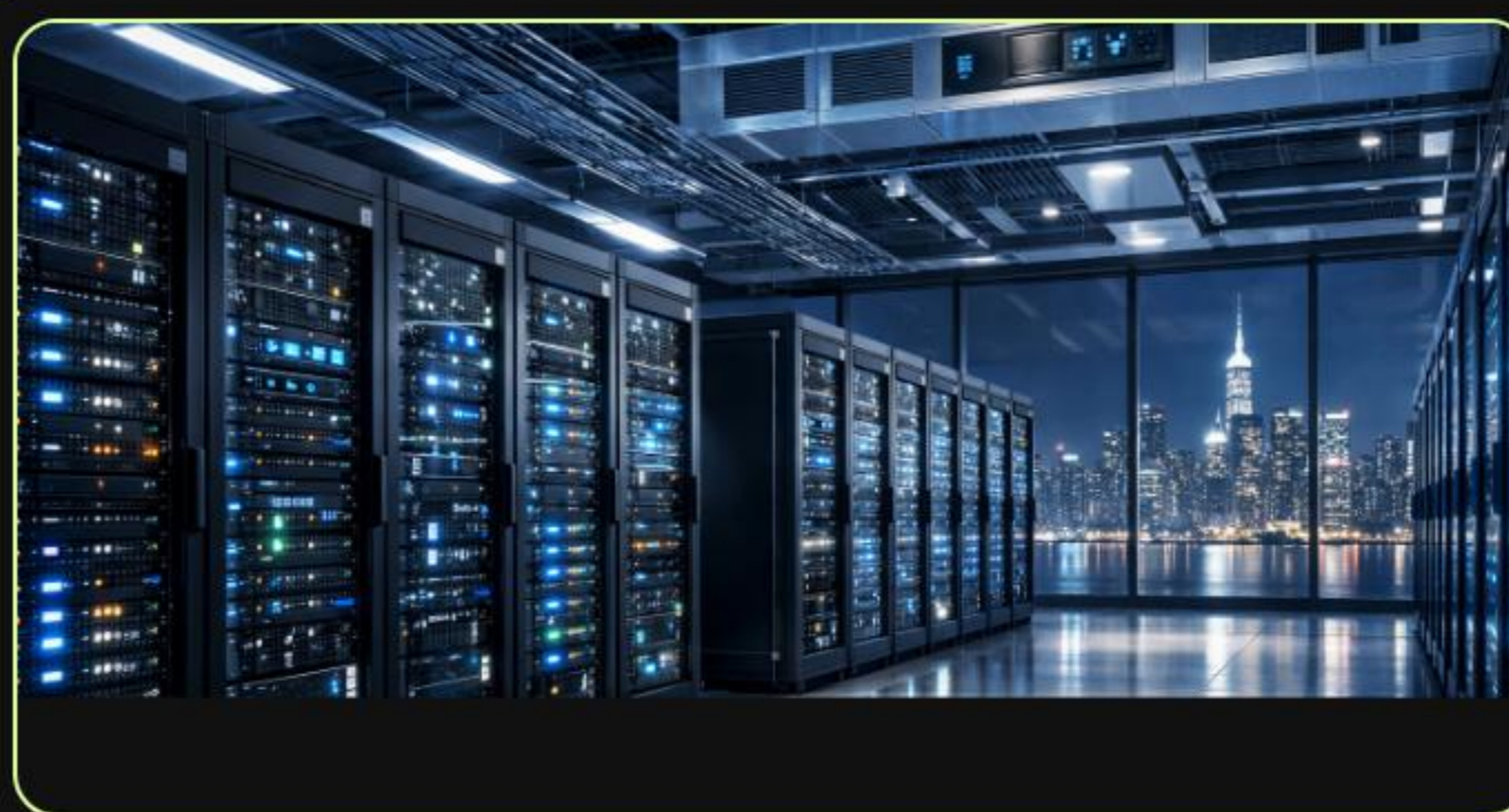
The Alpha is in the Infrastructure Layer

Strategic Asset Classes



Custom Silicon

Broadcom, Marvell, and Hyperscaler in-house chips (TPU/Maia).



Edge Computing

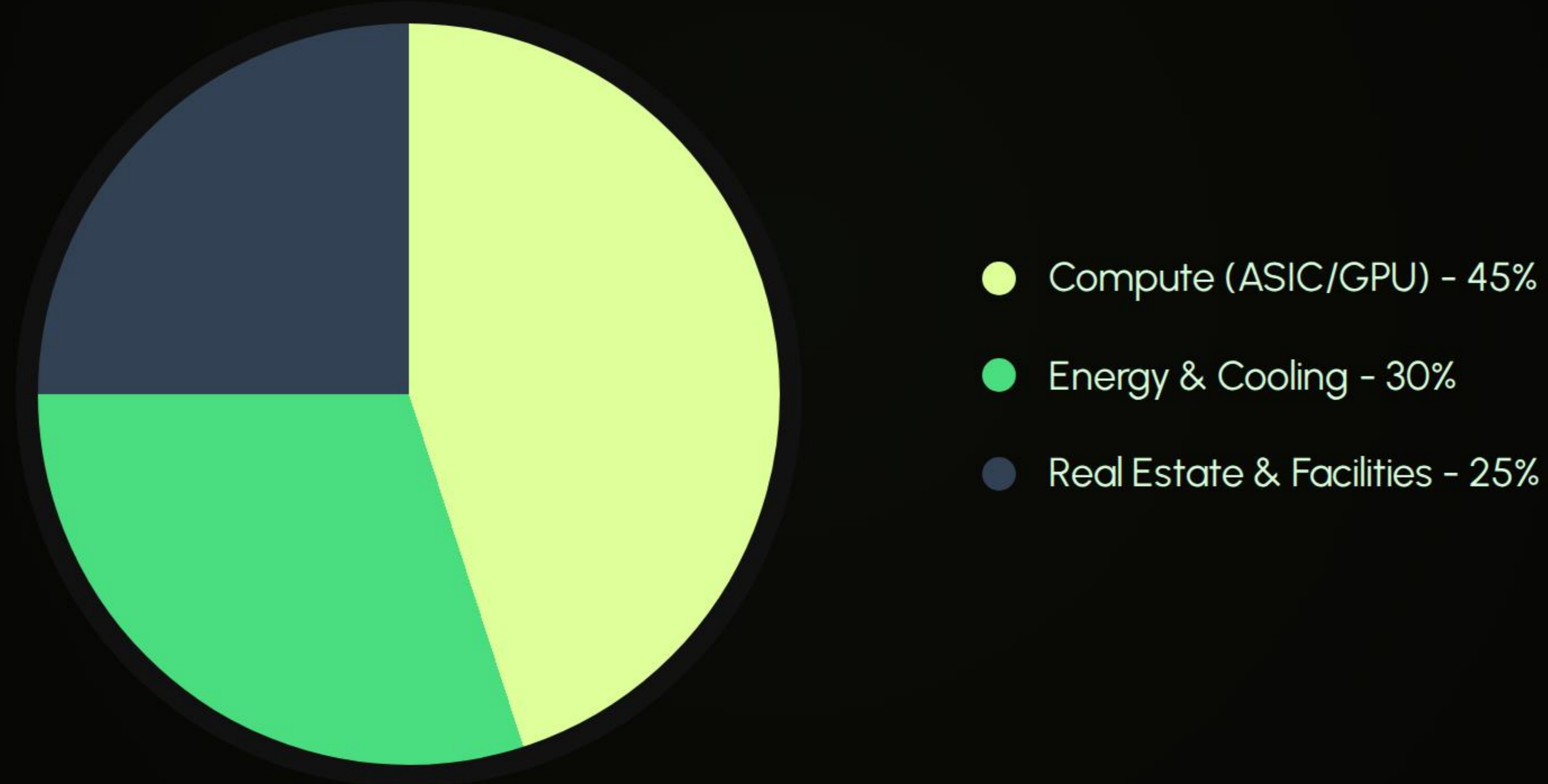
Low-latency infrastructure reducing the bottleneck between data and decision.



Liquid Cooling

Critical thermal management for high-density Blackwell-class racks.

Hyperscaler Spend Mix (2026E)



The Road to 2030

2026



Nuclear Renaissance: Tech-Utility JVs begin

2027



ASIC Dominance in Inference workloads

2028



Autonomous Grid: AI-Managed power distribution

2030



AGI-Ready Infrastructure complete

"In a world of infinite software, the only enduring moats are finite physical resources: Power, Land, and Silicon."

— LoseFinance Institutional Research

Institutional Q&A

Navigate the 2026 Divergence with Precision

Access our full terminal reports at losefinance.com

Image Sources



https://miro.medium.com/0*X4xelCEuRIFb-Qmf

Source: medium.com

Thumbnail for

https://static.vecteezy.com/system/resources/previews/065/935/704/large_2x/a-close-up-view-of-an-ai-chip-mounted-on-a-circuit-board-the-intricate-network-of-blue-circuits-and-glowing-elements-creates-a-futuristic-atmosphere-emphasizing-advanced-technology-photo.jpg

www.vecteezy.com
Source: www.vecteezy.com

Thumbnail for

<https://www.abiresearch.com/hubfs/AI-Generated%20Media/Images/The%20image%20depicts%20a%20sleek%20modern%20data%20center%20environment%20filled%20with%20rows%20of%20hightech%20server%20racks%20illuminated%20by%20cool%20blue%20and%20white%20lighting%20Each%20ra-1.png>

www.abiresearch.com
Source: www.abiresearch.com



https://gfmag.com/wp-content/uploads/2026/05/shutterstock_2750095799-scaled.jpg

Source: gfmag.com
